

\$237,500 - 405 10511 42 Avenue, Edmonton

MLS® #E4443692

\$237,500

3 Bedroom, 2.00 Bathroom, 1,179 sqft

Condo / Townhouse on 0.00 Acres

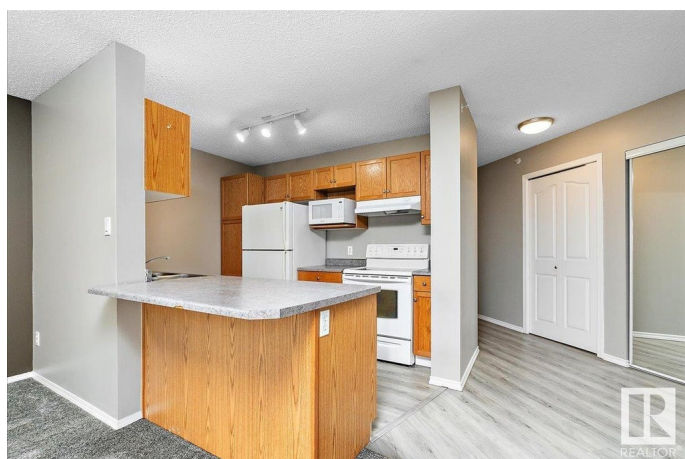
Rideau Park (Edmonton), Edmonton, AB

Welcome to #405 Grande Whitemud! Well cared for 3 bedroom, 2 bathroom, top floor condo unit with 1 title underground parking stall & assigned storage locker. This lovely condo unit features: 'U' shaped kitchen with bar seating, dining area, large living room with gas fireplace & access to north-facing balcony, primary bedroom with 3pc ensuite, 2nd & 3rd bedrooms, 4pc bathroom, and laundry room. Building amenities include two social rooms, exercise room and visitor parking. Walking distance to shops, restaurants & services of Whitemud Crossing. Convenient location with easy access to transit, Southgate LRT, Southgate Mall, major roadways, U of A campus & hospital.

Built in 1998

Essential Information

MLS® #	E4443692
Price	\$237,500
Bedrooms	3
Bathrooms	2.00
Full Baths	2
Square Footage	1,179
Acres	0.00
Year Built	1998
Type	Condo / Townhouse



Sub-Type	Lowrise Apartment
Style	Single Level Apartment
Status	Active

Community Information

Address	405 10511 42 Avenue
Area	Edmonton
Subdivision	Rideau Park (Edmonton)
City	Edmonton
County	ALBERTA
Province	AB
Postal Code	T6J 7G8

Amenities

Amenities	Exercise Room, No Animal Home, No Smoking Home, Parking-Visitor, Social Rooms, Storage Cage
Parking	Stall, Underground

Interior

Interior Features	ensuite bathroom
Appliances	Dishwasher-Built-In, Refrigerator, Stacked Washer/Dryer, Stove-Electric, Window Coverings
Heating	Hot Water, Natural Gas
Fireplace	Yes
Fireplaces	Corner
# of Stories	4
Stories	1
Has Basement	Yes
Basement	None, No Basement

Exterior

Exterior	Wood, Stucco
Exterior Features	Landscaped, Public Transportation, Schools, Shopping Nearby
Roof	Asphalt Shingles
Construction	Wood, Stucco
Foundation	Concrete Perimeter

Additional Information

Date Listed	June 21st, 2025
-------------	-----------------

Days on Market	25
Zoning	Zone 16
Condo Fee	\$742

DATA IS DEEMED RELIABLE BUT IS NOT GUARANTEED ACCURATE BY THE REALTORS® ASSOCIATION OF EDMONTON. COPYRIGHT 2025 BY THE REALTORS® ASSOCIATION OF EDMONTON. ALL RIGHTS RESERVED. Trademarks are owned or controlled by the Canadian Real Estate Association (CREA) and identify real estate professionals who are members of CREA (REALTOR®, REALTORS®) and/or the quality of services they provide (MLS®, Multiple Listing Service®)

Listing information last updated on July 16th, 2025 at 4:02am MDT