

\$99,000 - 602 10106 105 Street, Edmonton

MLS® #E4444864

\$99,000

1 Bedroom, 1.00 Bathroom, 996 sqft

Condo / Townhouse on 0.00 Acres

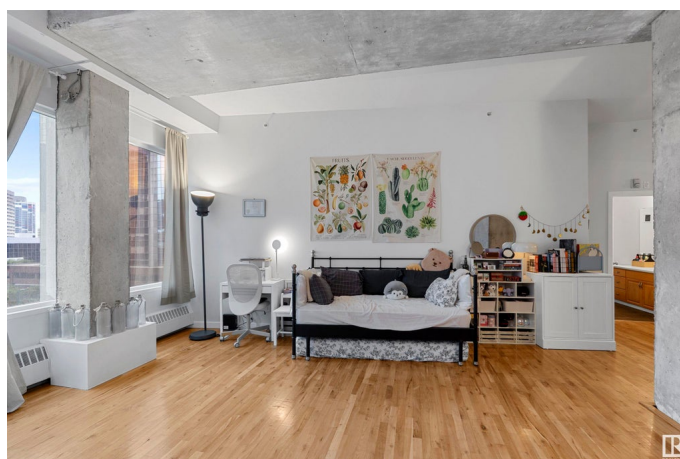
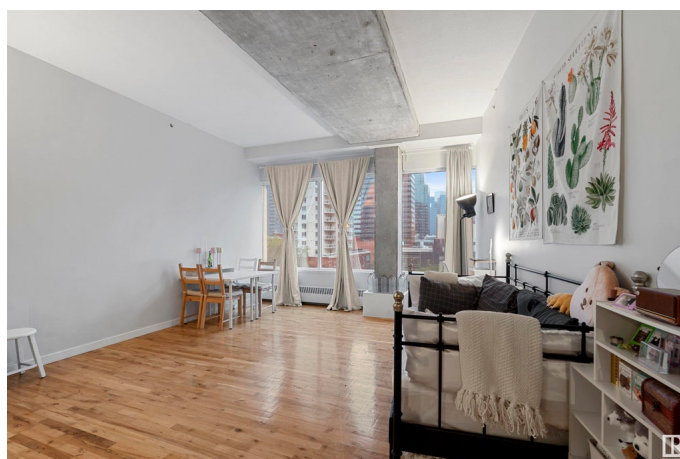
Downtown (Edmonton), Edmonton, AB

Modern 6th floor 996 SF loft in the heart of downtown. 10ft high ceilings, exposed concrete, and wall of windows showcase downtown views. Open kitchen with island flows into spacious living area. Large master bedroom includes direct access to a full 4pc bathroom. A versatile laundry room with cabinetry and ample storage, can serve as a den or multipurpose room. 1 titled heated indoor parking in a secured parkade is included! Steps from Rogers Place, MacEwan, River Valley, restaurants, future LRT and all amenities – perfect urban living!

Built in 1973

Essential Information

MLS® #	E4444864
Price	\$99,000
Bedrooms	1
Bathrooms	1.00
Full Baths	1
Square Footage	996
Acres	0.00
Year Built	1973
Type	Condo / Townhouse
Sub-Type	Apartment High Rise
Style	Single Level Apartment
Status	Active



Community Information

Address	602 10106 105 Street
Area	Edmonton
Subdivision	Downtown (Edmonton)
City	Edmonton
County	ALBERTA
Province	AB
Postal Code	T5J 5E7

Amenities

Amenities	Ceiling 10 ft., Intercom, Security Door, Sprinkler System-Fire
Parking	Parkade

Interior

Interior Features	ensuite bathroom
Appliances	Dishwasher-Built-In, Dryer, Hood Fan, Refrigerator, Stove-Electric, Washer, Window Coverings
Heating	Fan Coil, Natural Gas
# of Stories	10
Stories	1
Has Basement	Yes
Basement	None, No Basement

Exterior

Exterior	Concrete
Exterior Features	Public Transportation, View Downtown
Roof	Tar & Gravel
Construction	Concrete
Foundation	Concrete Perimeter

Additional Information

Date Listed	June 27th, 2025
Days on Market	3
Zoning	Zone 12
Condo Fee	\$688

DATA IS DEEMED RELIABLE BUT IS NOT GUARANTEED ACCURATE BY THE REALTORS® ASSOCIATION OF EDMONTON. COPYRIGHT 2025 BY THE REALTORS® ASSOCIATION OF EDMONTON. ALL RIGHTS RESERVED. Trademarks are owned or controlled by the Canadian Real Estate Association (CREA) and identify real estate professionals who are members of CREA (REALTOR®, REALTORS®) and/or the quality of services they provide (MLS®, Multiple Listing Service®)

Listing information last updated on June 30th, 2025 at 11:32am MDT